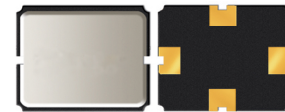


345 MHz ONE-PORT SMD SAW RESONATOR

ASR345.00A1-SS2



RoHS
Compliant



5.0 x 3.5 x 1.5mm

FEATURES:

- Low loss
- 5.0mm leaded package
- 50ohms termination

APPLICATIONS:

- Wireless remote controller
- Mobile communication

STANDARD SPECIFICATIONS:

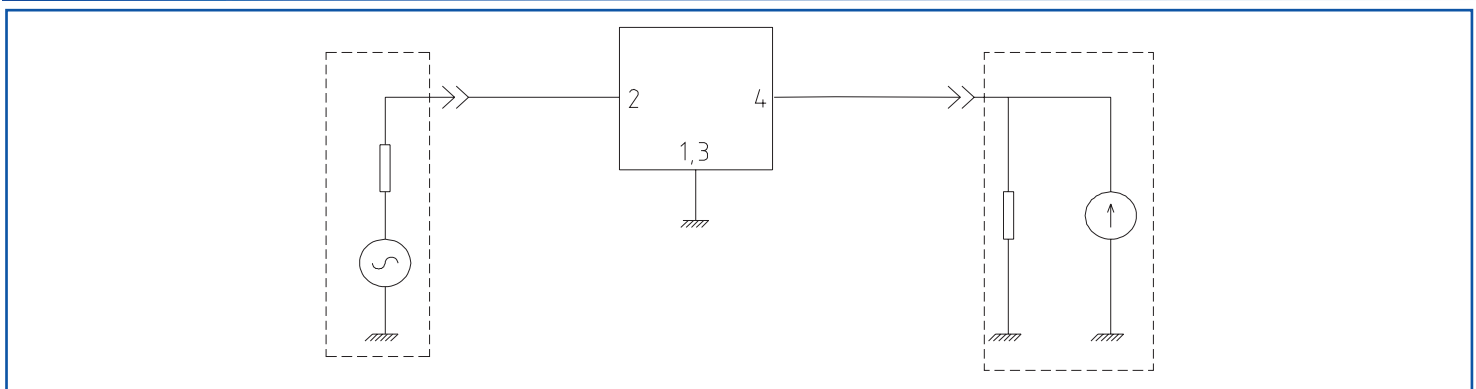
MAXIMUM RATINGS

| Item | Value |
|-----------------------------|---------------|
| Operation Temperature Range | -40C to +80°C |
| Storage Temperature Range | -45C to +85°C |
| DC Voltage | 10V |
| Source Power | 0 dBm |

ELECTRICAL CHARACTERISTICS

| Item | Minimum | Typical | Maximum | Unit | |
|----------------------------|-----------------------------|---------|---------|--------|--------|
| Center Frequency (f_c) | 344.925 | 345.00 | 345.075 | MHz | |
| Insertion Loss | -- | 1.5 | 2.5 | dB | |
| Quality Factor | Unloaded Q | 11,000 | -- | -- | |
| | 50Ω Load Q | -- | 2,000 | -- | |
| Temperature Stability | Turnover Temperature | 25 | -- | C | |
| | Freq. Temp. Coefficient | -- | 0.032 | -- | ppm/ C |
| Frequency Aging | -- | <±10 | -- | ppm/yr | |
| DC Insulation Resistance | 1.0 | -- | -- | MΩ | |
| RF equivalent RLC Model | Motional Resistance R1 | -- | 14 | 21 | Ω |
| | Motional Inductance L1 | -- | 63 | -- | μH |
| | Motional Capacitance C1 | -- | 2.5 | -- | fF |
| | Shunt Static Capacitance C0 | 2.6 | 2.9 | 3.2 | pF |

TEST CIRCUIT



345 MHz ONE-PORT SMD SAW RESONATOR

ASR345.00A1-SS2



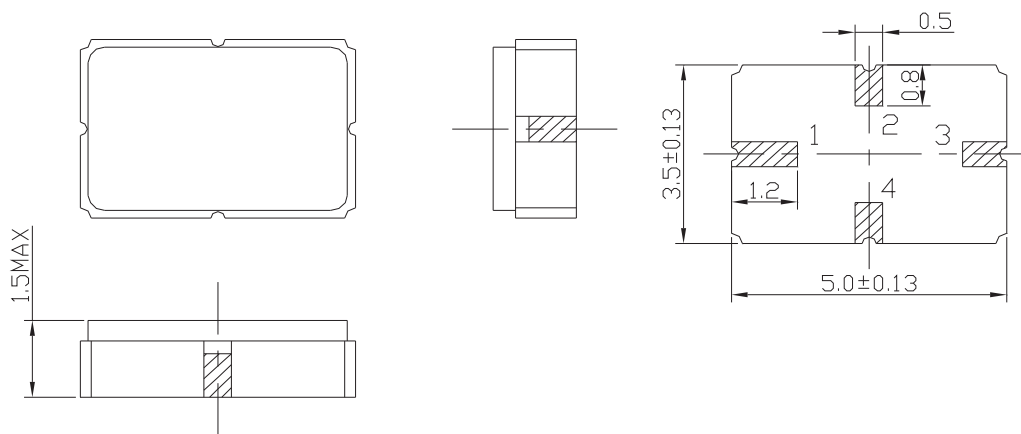
RoHS
Compliant



5.0 x 3.5 x 1.5mm

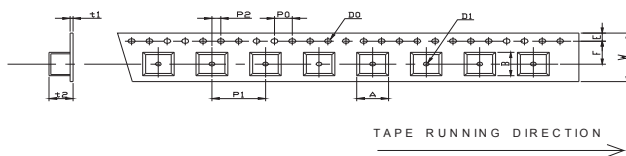
OUTLINE DRAWING:

Dimensions: mm

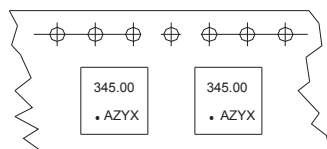
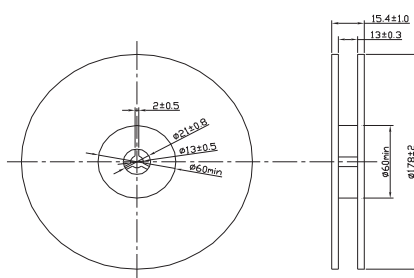


| Pin No. | Function |
|---------|----------|
| Pin 1 | Input |
| Pin 3 | Output |
| Other | Ground |

TAPE & REEL:

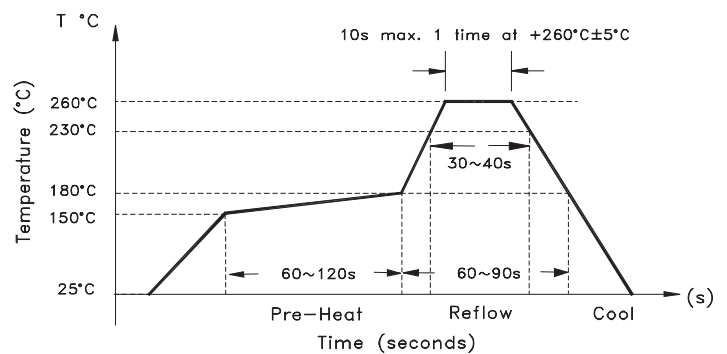


| W | F | E | P0 | P1 | P2 | D0 | D1 | t1 | I2 | A | B |
|-----------|-----------|-----------|-----------|-----------|-----------|------------|------------|------|-------|------|------|
| 12.0 | 5.5 | 1.75 | 4.0 | 8.0 | 2.0 | $\Phi 1.5$ | $\Phi 1.5$ | 0.31 | 1.950 | 4.0 | 5.5 |
| ± 0.3 | ± 0.1 | ± 0.1 | ± 0.2 | ± 0.1 | ± 0.2 | ± 0.1 | ± 0.25 | max. | max. | max. | max. |



Dimensions: mm

REFLOW PROFILE:



ATTENTION: Abracon Corporation's products are COTS – Commercial-Off-The-Shelf products; suitable for Commercial, Industrial and, where designated, Automotive Applications. Abracon's products are not specifically designed for Military, Aviation, Aerospace, Life-dependant Medical applications or any application requiring high reliability where component failure could result in loss of life and/or property. For applications requiring high reliability and/or presenting an extreme operating environment, written consent and authorization from Abracon Corporation is required. Please contact Abracon Corporation for more information.

ABRACON IS
ISO9001:2008
CERTIFIED



Visit www.abracon.com for Terms & Conditions of Sale **Revised: 08.28.10**
30332 Esperanza, Rancho Santa Margarita, California 92688
tel 949-546-8000 | fax 949-546-8001 | www.abracon.com