

LEADED, TO-39 PACKAGE
SAW RESONATORS
ASR310



9.8 x 9.8 x 3.6 mm

FEATURES:

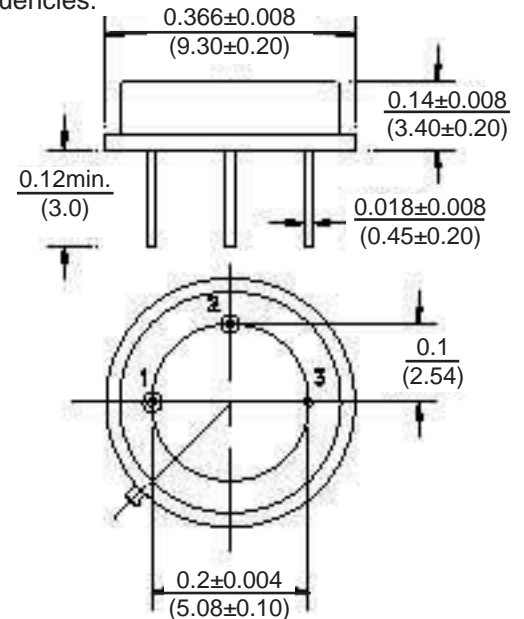
- One-port SAW resonator 310MHz. See page 87- 88 for additional frequencies.
- Wide operating temperature range.

APPLICATIONS:

- Wireless car alarm, Garage door opener.
- Remote keyless entry.

ABSOLUTE MAXIMUM RATINGS:

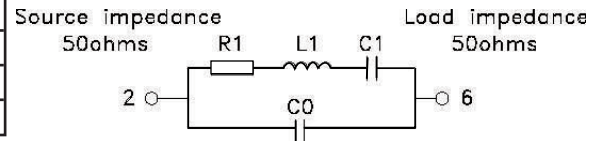
DC voltage	± 30V
Operating temperature	-40°C to +85°C
Storage temperature	-40°C to +85°C
Maximum power dissipation	10dBm



Dimensions: Inches (mm)

Pin No.	Function
1	Input/Output
2	Output/Input
3	Case GND

Equivalent circuit:



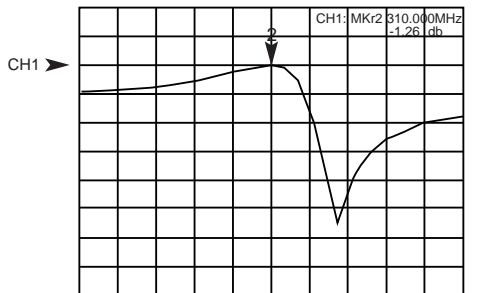
STANDARD SPECIFICATIONS

CHARACTERISTIC	UNIT	min.	typ.	max.	
Center frequency	Fr	MHz	309.925	310.000	310.075
Insertion loss	IL	dB	-	1.3	2.0
Unloaded quality factor	Q	-	-	15333	-
loaded quality factor	LQ	-	-	2,000	-
Aging per year		ppm	-	-	10
Shunt capacitance	Co	pF	1.8	2.1	2.4
Motional resistance	R1	W	-	15	24
Motional inductance	L1	mH	-	118.143	-
Motional capacitance	C1	fF	-	2.2333	-
Turn-over temperature	To	°C	25	40	55
Temperature coefficient	TC	ppm/C ²	-	0.037	-

Reliability specifications, see SAW application notes.

Typical Frequency Response

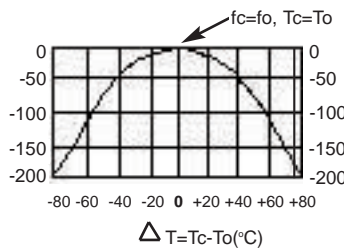
1: Transmission /M Log Mag 5.0 dB/ Ref -1.50 dB
 2: Off



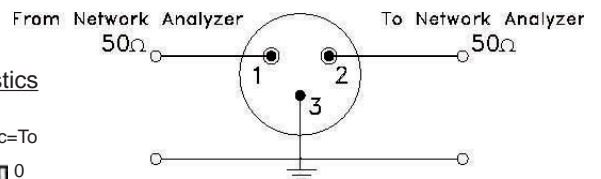
Center 310.000 MHz

Span 0.75 MHz

Temperature Characteristics



Test circuit:



Marking:

310
 AZY

(ZY: Date code)

NOTE: Left blank if standard • All specifications and markings subject to change without notice

29 Journey • Aliso Viejo, CA 92656 • USA
 (949) 448-7070 • FAX: (949) 448-8484

E-MAIL: abinfo@abracon.com • INTERNET ADDRESS: www.abracon.com

