

THRU-HOLE POWER INDUCTORS



AIUR-11, AIUR-12 SERIES

FEATURES:

- Ferrite core with heat shrink tube
- High Reliability

OPTIONS:

- Bulk Pack is standard

APPLICATIONS:

- Electronic Appliance
- Noise Filtering

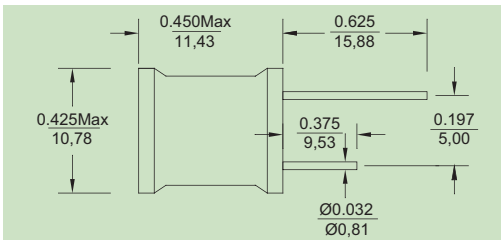
STANDARD SPECIFICATIONS:

Part Number AIUR-11	L (μH)	R _{DC} (Ω) Max	I _{DC} (A) Max
3R9K	3.9	0.022	6.80
4R7K	4.7	0.024	6.20
5R6K	5.6	0.025	5.60
6R8K	6.8	0.028	5.10
8R2K	8.2	0.030	4.60
100K	10	0.034	4.20
120K	12	0.038	3.80
150K	15	0.043	3.30
180K	18	0.049	3.10
220K	22	0.054	2.70
270K	27	0.059	2.50
330K	33	0.066	2.30
390K	39	0.078	2.20
470K	47	0.102	1.90
560K	56	0.138	1.60

Part Number AIUR-11	L (μH)	R _{DC} (Ω) Max	I _{DC} (A) Max
680K	68	0.168	1.45
820K	82	0.174	1.30
101K	100	0.180	1.20
121K	120	0.234	1.10
151K	150	0.276	1.00
181K	180	0.300	0.92
221K	220	0.353	0.86
271K	270	0.500	0.76
331K	330	0.635	0.70
391K	390	0.720	0.62
471K	470	0.816	0.60
561K	560	1.030	0.54
681K	680	1.200	0.51
821K	820	1.54	0.45
102K	1000	2.16	0.39

Part Number AIUR-11	L (μH)	R _{DC} (Ω) Max	I _{DC} (A) Max
122K	1200	2.40	0.360
152K	1500	2.76	0.340
182K	1800	3.60	0.300
222K	2200	4.00	0.245
272K	2700	6.00	0.238
332K	3300	6.72	0.225
392K	3900	8.80	0.200
472K	4700	11.00	0.185
562K	5600	13.20	0.170
682K	6800	14.50	0.150
822K	8200	16.55	0.140
103K	10000	20.40	0.130
123K	12000	24.00	0.120
153K	15000	27.60	0.100

PHYSICAL CHARACTERISTICS:



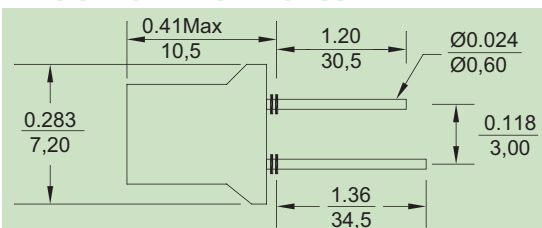
TECHNICAL INFORMATION:

- Test frequency: 10KHz 0.1VRMS
- Tolerance: K=10% (Standard)
- Letter suffix indicates standard tolerance
- Temperature: -40°C to +125°C with no load -40°C to +85°C with full rated current
- Marking: Value and tolerance
- L drops 10% typical @ IDC from initial value
- UL Shrink Tube
- Check SCD for detail E&M specification

Part Number AIUR-12	L (μH)	R _{DC} (Ω) Max	I _{DC} (A) Max	SRF (MHz) Min
100K	10	0.70	1.50	40.0
150K	15	0.80	1.10	30.0
220K	22	0.11	1.00	20.0
330K	33	0.15	0.92	15.0
470K	47	0.28	0.78	12.8
680K	68	0.30	0.77	6.8
101K	100	0.50	0.66	6.0
151K	150	0.54	0.52	4.4

Part Number AIUR-12	L (μH)	R _{DC} (Ω) Max	I _{DC} (A) Max	SRF (MHz) Min
221K	220	1.05	0.44	3.7
331K	330	1.21	0.38	3.3
471K	470	1.87	0.31	2.9
681K	680	2.70	0.25	2.2
102K	1000	3.80	0.17	1.8
152K	1500	5.40	0.13	1.7
222K	2200	11.00	0.11	1.4
472K	4700	18.00	0.07	0.6

PHYSICAL CHARACTERISTICS:



TECHNICAL INFORMATION:

- Test frequency: 1KHz, 0.1VRMS
- Tolerance: K=±10%
- Letter suffix indicates standard tolerance
- Temperature: -40°C to +125°C with no load -40°C to +85°C with full rated current
- Marking: Value and tolerance
- PVC tubing
- L drops 10% typical @ IDC from initial value
- Check SCD for detail E&M specification