

# SMD 959.5MHz SAW FILTER

AFS959.5W01-TS3



3.8 x 3.8 x 1.5mm



**RoHS**  
Compliant

## FEATURES:

- Low loss
- 3.8 x 3.8 x 1.5mm package
- Suitable for ROHS reflow profile

## APPLICATIONS:

- RF filter for telecommunications
- Wireless audio
- ISM-band application

## STANDARD SPECIFICATIONS:

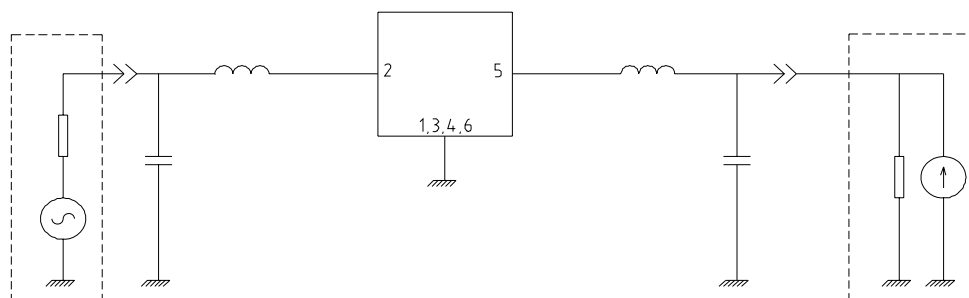
### MAXIMUM RATINGS

Item	Value
Operation Temperature Range	-40°C to +85°C
Storage Temperature Range	-40°C to +85°C
DC Permissible Voltage	10V DC max.
Maximum Input Power	0 dBm

### ELECTRICAL CHARACTERISTICS

Item	Unit	Min.	Typ.	Max.
Center Frequency (fc)	MHz		959.5	
3dB Passband Width	MHz		fc ±3.0	
Insertion Loss (Passband)	dB			4.5
Ripple Deviation (Passband)	dB			1.5
Stopband Suppression				
DC ~ 879.5 MHz	dB	55		
879.5 ~ 914.5 MHz	dB	45		
1001.1 ~ 1019.5 MHz	dB	40		
1019.5 ~ 1500 MHz	dB	55		
Terminating Impedance	Ω		50 + j60.3	

## TEST CIRCUIT



# Surface Mount 959.5MHz SAW FILTER

AFS959.5W01-TS3

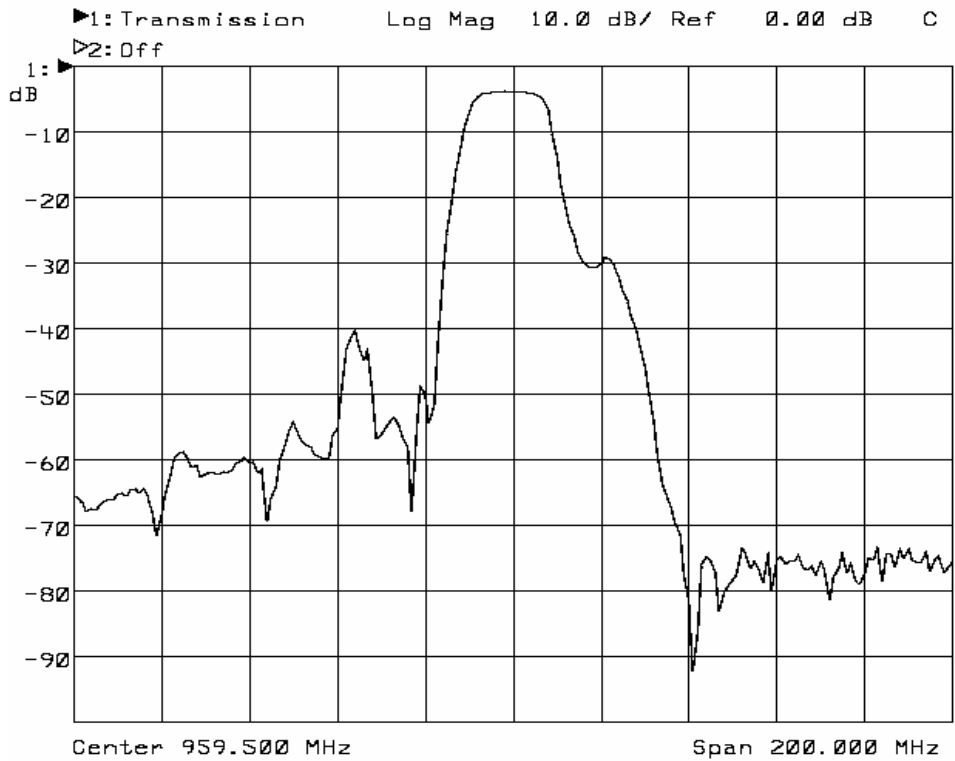


RoHS  
Compliant



3.8 x 3.8 x 1.5mm

## FREQUENCY CHARACTERISTICS



# Surface Mount 959.5MHz SAW FILTER

AFS959.5W01-TS3

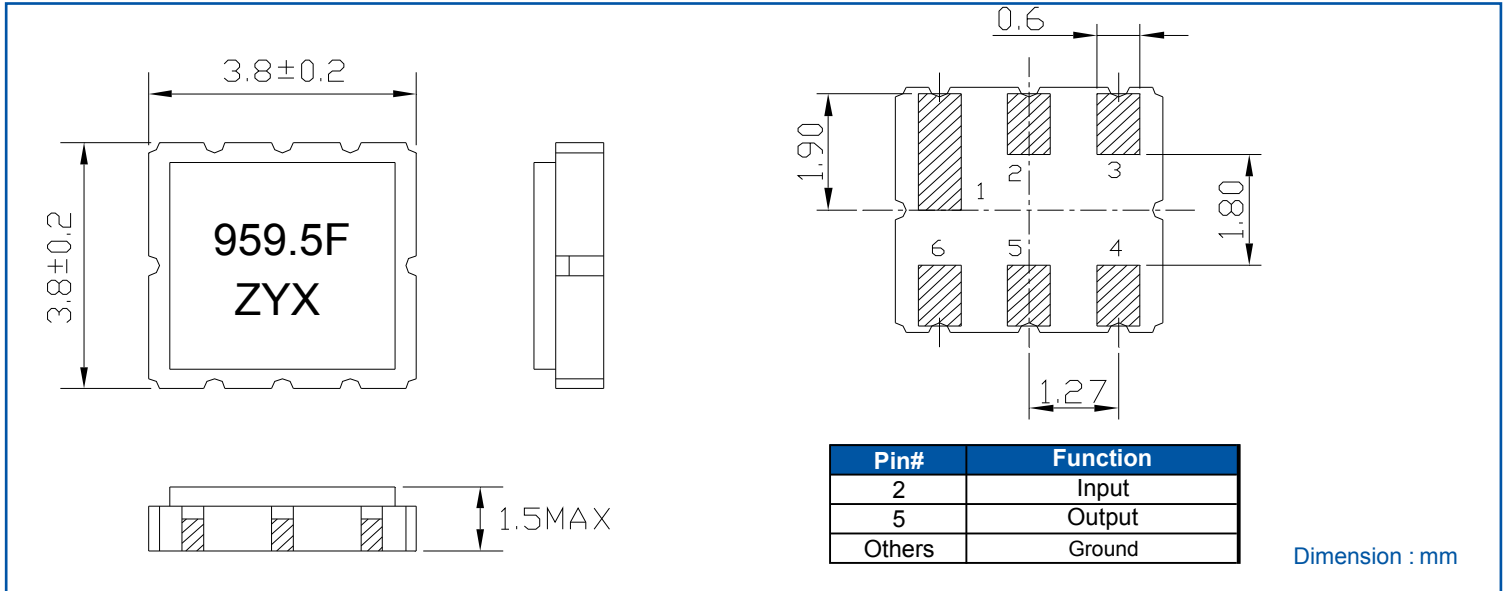


**RoHS**  
Compliant

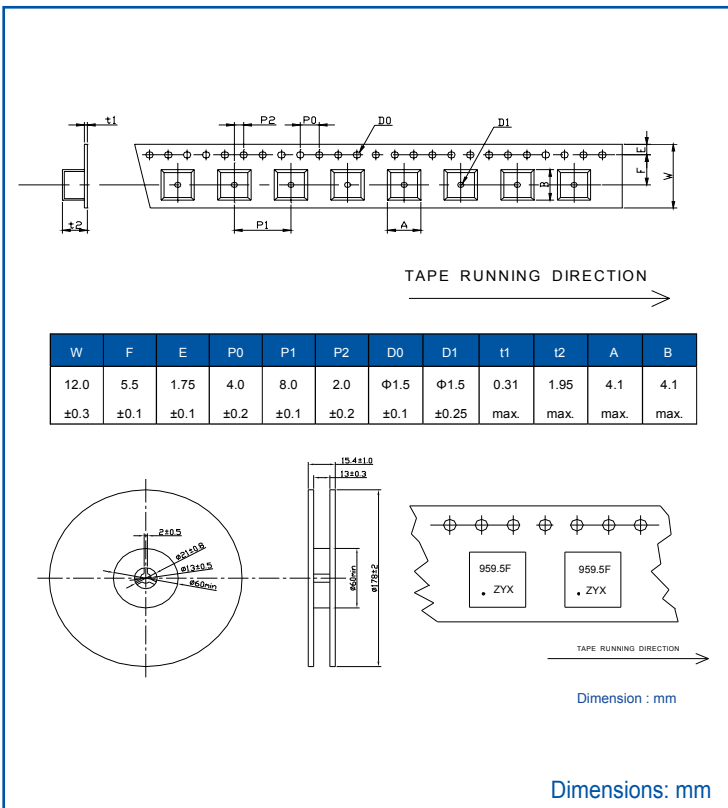


3.8 x 3.8 x 1.5mm

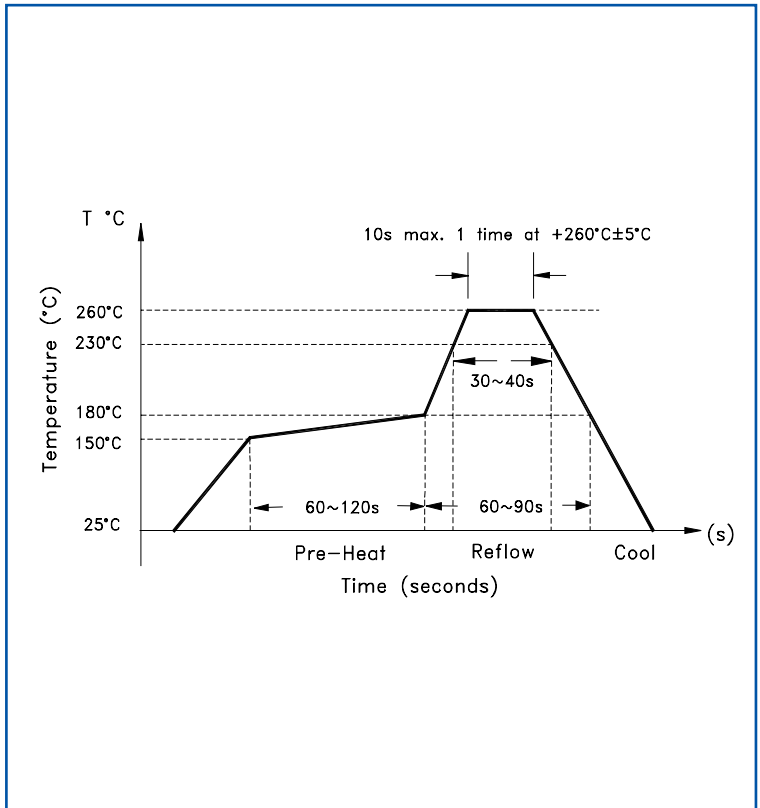
## OUTLINE DIMENSIONS:



## TAPE & REEL:



## REFLOW PROFILE:



**ATTENTION:** Abracon Corporation's products are COTS – Commercial-Off-The-Shelf products; suitable for Commercial, Industrial and, where designated, Automotive Applications. Abracon's products are not specifically designed for Military, Aviation, Aerospace, Life-dependant Medical applications or any application requiring high reliability where component failure could result in loss of life and/or property. For applications requiring high reliability and/or presenting an extreme operating environment, written consent and authorization from Abracon Corporation is required. Please contact Abracon Corporation for more information.

ABRACON IS  
ISO9001:2008  
CERTIFIED



Visit [www.abracon.com](http://www.abracon.com) for Terms & Conditions of Sale **Revised: 08.30.10**  
30332 Esperanza, Rancho Santa Margarita, California 92688  
tel 949-546-8000 | fax 949-546-8001 | [www.abracon.com](http://www.abracon.com)