

# 430.5MHz SMD SAW FILTER

AFS430.5W01-TE



RoHS  
Compliant



5.0 x 5.0 x 1.5mm

## FEATURES:

- Low loss
- 5.0 x 5.0 x 1.5mm seam sealed package
- IR-reflow capable

## APPLICATIONS:

- Telecommunication

## STANDARD SPECIFICATIONS:

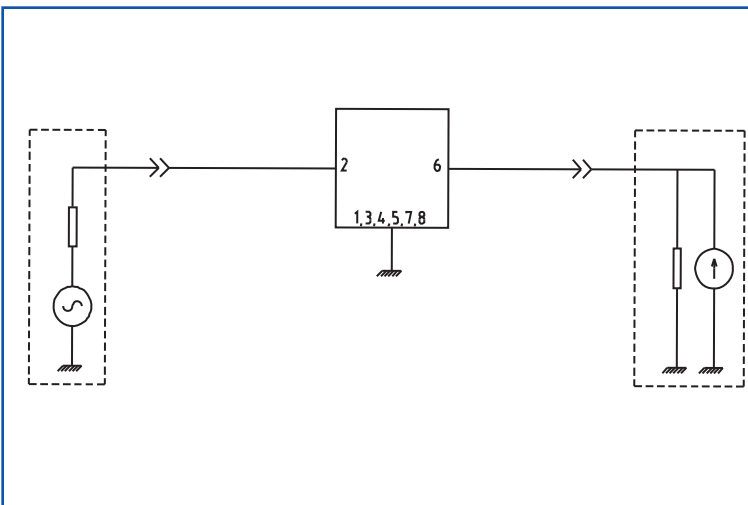
### MAXIMUM RATINGS

Item	Value
Operation Temperature Range	-40°C to +80°C
Storage Temperature Range	-40°C to +85°C
DC Permissive Voltage	12V DC max.
Maximum Input Power	0 dBm

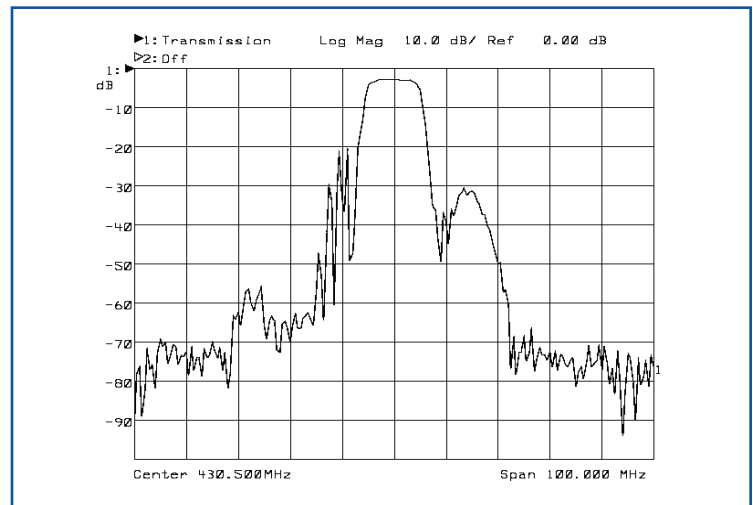
### ELECTRICAL CHARACTERISTICS

Item	Frequency (MHz)	Specification
Center Frequency (fo)	430.5	
PassBand Width	$f_o \pm 2.0$	
Insertion Loss	Passband	4.5 dB max.
Ripple	Passband	2.0 dB max
Stopband Attenuation	$f_o - 100 \sim f_o - 40.8$	55 dB min.
	$f_o + 40.8 \sim f_o + 100$	55 dB min.
Terminating Impedance		150Ω/0pF

## TEST CIRCUIT



## FREQUENCY CHARACTERISTICS:



# 430.5MHz SMD SAW FILTER

AFS430.5W01-TE

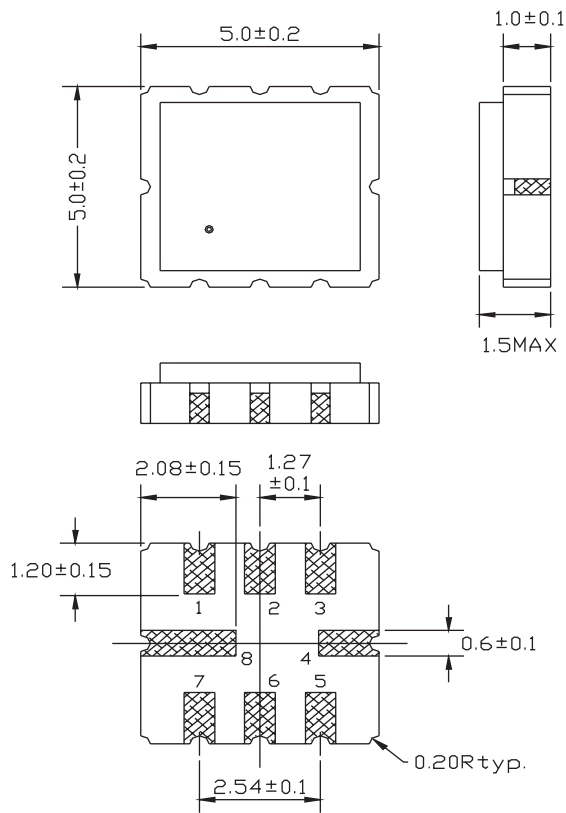


RoHS  
Compliant



5.0 x 5.0 x 1.5mm

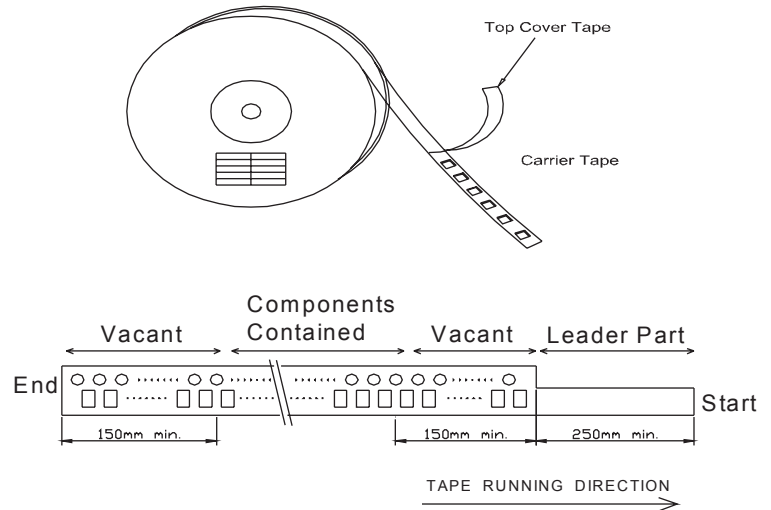
## OUTLINE DIMENSIONS:



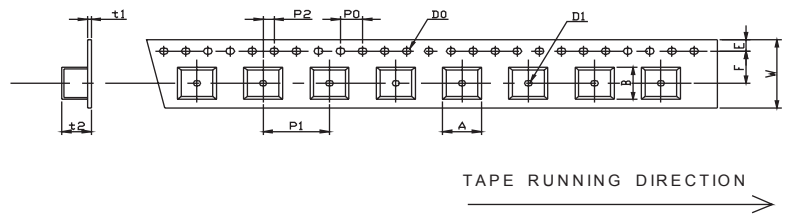
Dimension : mm

Pin No.	Function
Pin 2	Input
Pin 6	Output
Others	Ground

## TAPE & REEL: Tape and reel (1,000pcs/reel)



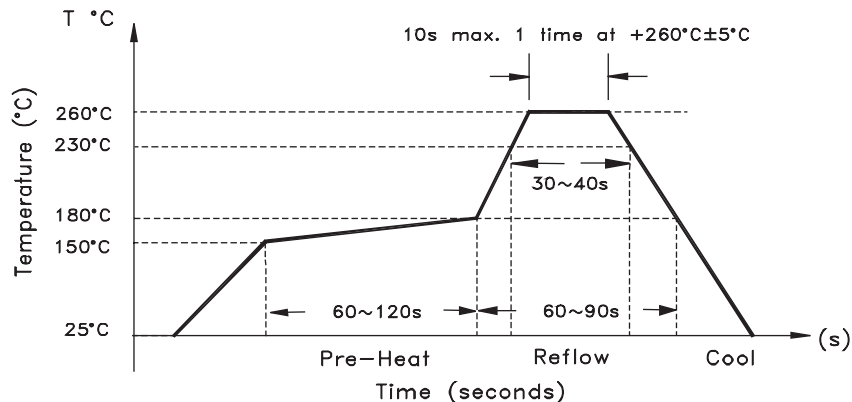
### DIMENSION AND PARTS DIRECTION



Dimension : mm

W	F	E	P0	P1	P2	D0	D1	t1	t2	A	B
12.0	5.5	1.75	4.0	8.0	2.0	Φ1.5	Φ1.5	0.31	1.95	5.5	5.5
±0.3	±0.1	±0.1	±0.2	±0.1	±0.2	±0.1	±0.25	max.	max.	max.	max.

## REFLOW PROFILE:



**NOTE:** Abracon manufactured products are intended for general commercial and industrial use. For applications requiring high reliability and/or presenting extreme operating environment, written consent & authorization from Abracon is required.

ABRACON IS  
ISO 9001 / QS 9000  
CERTIFIED



Visit [www.abracon.com](http://www.abracon.com) for Terms & Conditions of Sale **Revised: 12.23.09**  
30332 Esperanza, Rancho Santa Margarita, California 92688  
tel 949-546-8000 | fax 949-546-8001 | [www.abracon.com](http://www.abracon.com)